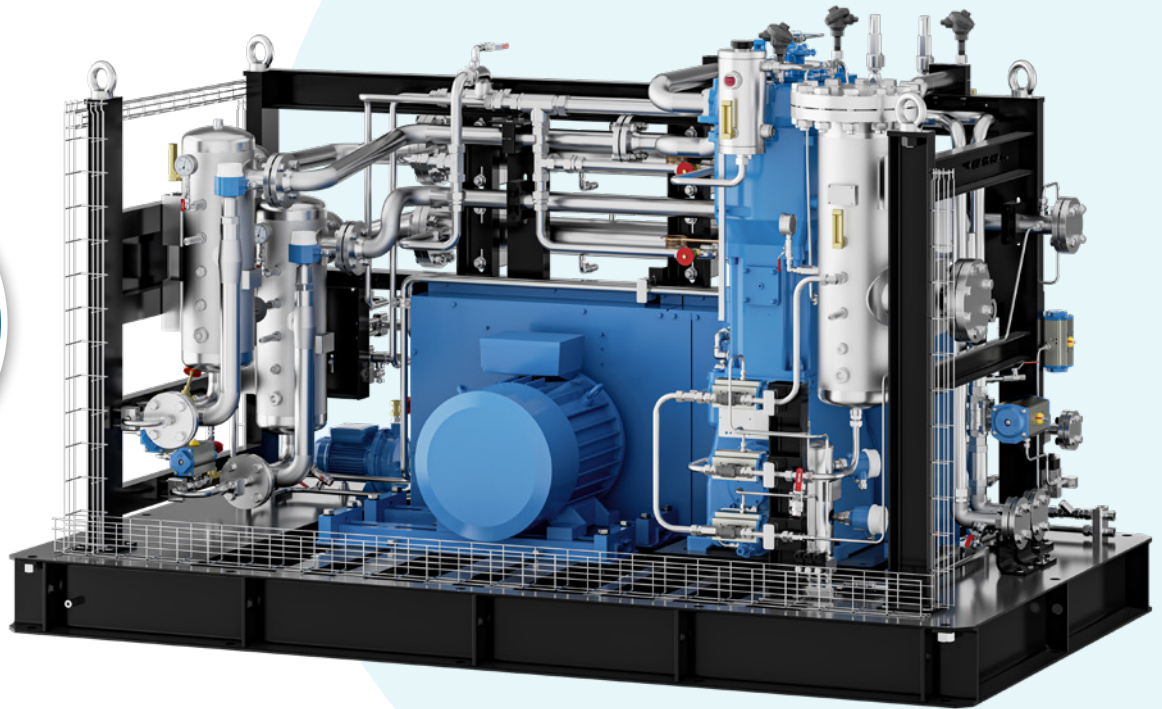


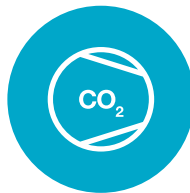
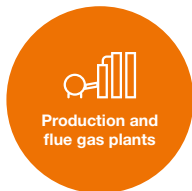
Our purity law

# ABSOLUTELY OIL-FREE!

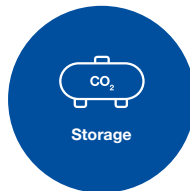


## COMPETENCE IN CO<sub>2</sub> COMPRESSION

### PRODUCTION

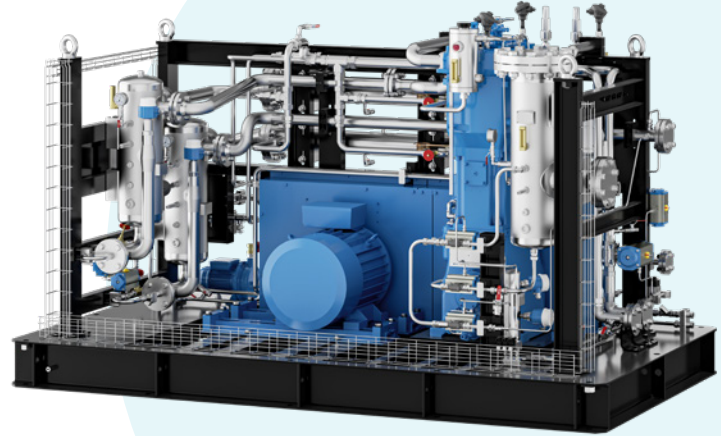


### APPLICATIONS

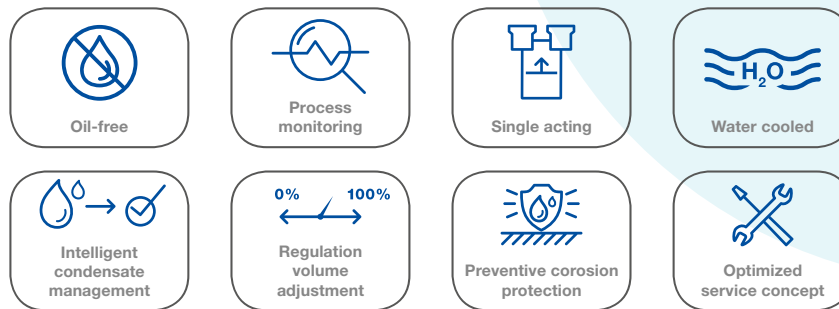


## TECHNICAL DATA FOOD - LINE 300

	TZW 60.1 -37
Gas type:	CO <sub>2</sub> , 100% watersaturated
Working principle:	single acting
Suction pressure (bar abs):	1
Final pressure (bar abs):	19
Mass flow (kg/h):	180 – 300
Drive power (kW):	37
Availability:	> 95%
Dimensions (W x H x D):	1700 x 2100 x 3000



### OVERVIEW PRODUCT FEATURES



### OUR FOOD-LINE COMPLIES AND CONFIRMS THE FOLLOWING CONFORMITIES:

- Suitable for food-contact
- Requirements of the regulation (EU) 10/2011
- Requirements of the regulation (EU) 1935/2004
- Requirements of the regulation US FDA
- BfR recommendations XXI
- NSF (National Sanitation Foundation, USA)

### MODULES / OPTIONS

