

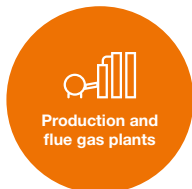
Our purity law

ABSOLUTELY OIL-FREE!



COMPETENCE IN CO₂ COMPRESSION

PRODUCTION



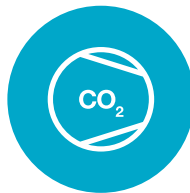
Production and flue gas plants



Capturing



Recovery and liquefaction



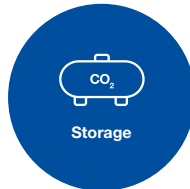
APPLICATIONS



Transportation



Beverage production



Storage



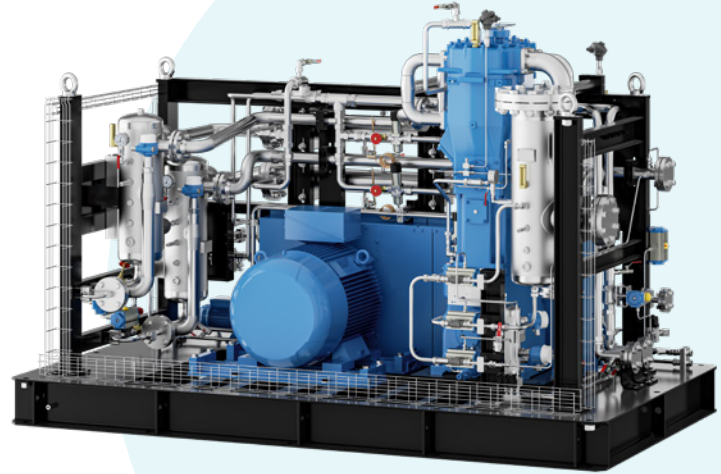
Extraction



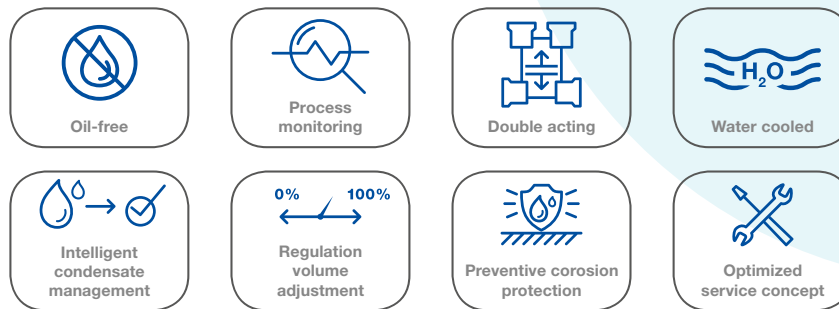
Production and storage of dry ice

TECHNICAL DATA FOOD - LINE 500

	TZW 70.1-75
Gas type:	CO ₂ , 100% watersaturated
Working principle:	double acting
Suction pressure (bar abs):	1
Final pressure (bar abs):	19
Mass flow (kg/h):	350 – 500
Drive power (kW):	75
Availability:	> 95%
Dimensions (W x H x D):	1700 x 2100 x 3000



OVERVIEW PRODUCT FEATURES



OUR FOOD-LINE COMPLIES AND CONFIRMS THE FOLLOWING CONFORMITIES:

- Suitable for food-contact
- Requirements of the regulation (EU) 10/2011
- Requirements of the regulation (EU) 1935/2004
- Requirements of the regulation US FDA
- BfR recommendations XXI
- NSF (National Sanitation Foundation, USA)

MODULES / OPTIONS

